

MONTHLY MEMBERSHIP PROGRESS REPORT

District 321B1

Results as of: 6/30/2024

GMT:

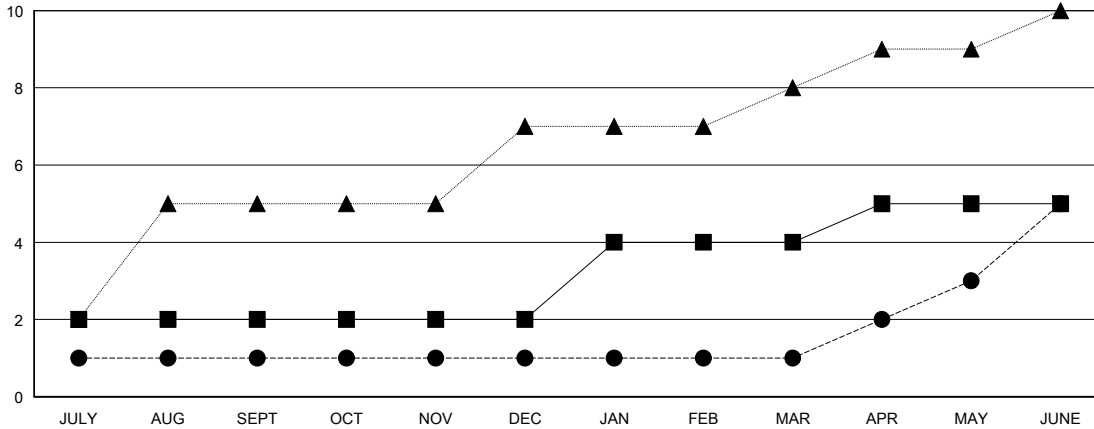
LOCATION INDIA

GMT CA

Clubs			
RESULTS FOR 2023-2024			
QUARTER	NEW CLUB GOAL	NEW CLUBS	DROPPED CLUBS
JULY/AUG/SEPT	2	1	0
OCT/NOV/DEC	0	0	3
JAN/FEB/MAR	2	0	2
APR/MAY/JUNE	1	4	1

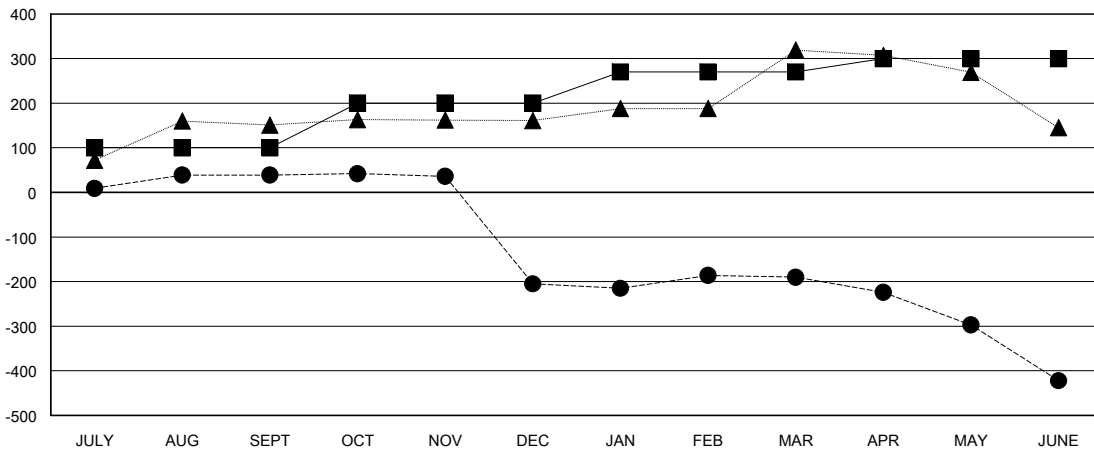
Members			
RESULTS FOR 2023-2024			
QUARTER	MEMBER GROWTH NET GOAL	MEMBER GROWTH ACTUAL	DROPPED MEMBERS ACTUAL (including transfers)
JULY/AUG/SEPT	100	104	59
OCT/NOV/DEC	100	16	257
JAN/FEB/MAR	70	75	54
APR/MAY/JUNE	30	369	384

GOALS AND ACTUAL NEW CLUBS CUMULATIVE



- - CURRENT YEAR GOALS FOR NEW CLUBS
- - CURRENT YEAR ACTUAL NEW CLUBS
- ▲ - LAST YEAR ACTUAL NEW CLUBS

GOALS AND ACTUAL MEMBERS CUMULATIVE



- - MEMBER GROWTH NET GOAL
- - MEMBER GROWTH ACTUAL
- ▲ - LAST YEAR MEMBERSHIP ACTUAL

DROPPED CLUBS: 6	
DROPPED MEMBERS	
DECEASED	9
CLUB CANCELLED	74
OTHER	671
TOTAL	754

53 CLUBS OF 108 ADDED 1 OR MORE NEW MEMBERS

GENDER DISTRIBUTION	
MALE	1,556 (58.50%)
FEMALE	1,096 (41.20%)

[CLICK HERE FOR CUMULATIVE MEMBERSHIP DATA](#)

TOTAL FAMILY UNIT MEMBERS	1,119
FAMILY MEMBERS PAYING HALF DUES	611